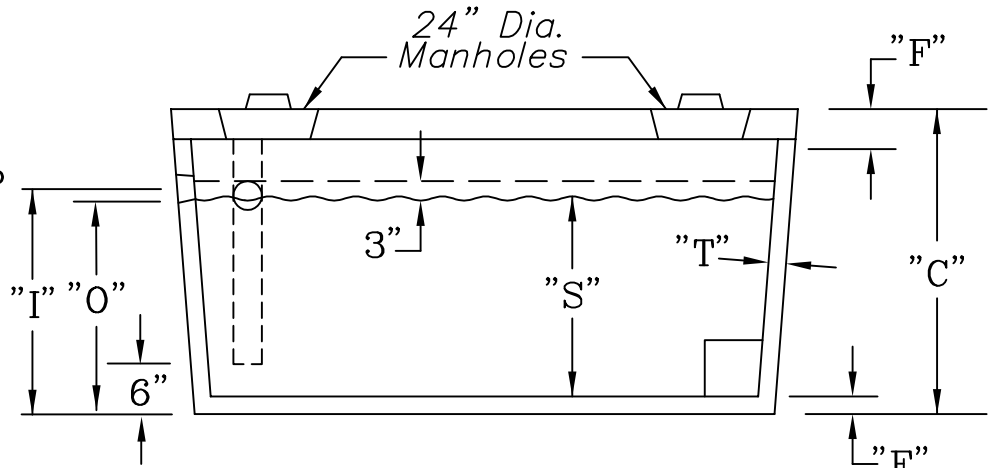


SPECIFICATIONS:

- Concrete: 4000 psi @ 28 days
- Entrained air: 5-9%
- Bar rein: ASTM A 615 GR60
- Fiber rein: Forta Ferro
- I/O baffle Polylok T baffle
- Max earth cover 2'
- Joint seal CS 102
- Plastic Pipe Seals

OPTIONS:

- Cast in EZ-Set risers
- Booted pipe seals
- Coating inside/outside
- Outlet filter
- Gas baffle



F = LID THICKNESS
 E = BASE THICKNESS
 C = HEIGHT OVERALL
 I = INLET
 A = LENGTH
 S = LIQUID LEVEL
 T = WALL THICKNESS
 B = WIDTH
 O = OUTLET

DIMENSIONS									
SIZE	A	B	C	I	O	S	T	E	F
1000	115"	61"	65"	51"	48"	43"	4"	5"	8"
1250	126"	67"	65"	50"	47"	42"	4"	5"	8"
1500	114"	80"	69"	54"	51"	46"	4"	5"	8"
2000	153"	81"	69"	54"	51"	46"	4"	5"	8"

GUARDIAN CONCRETE PRODUCTS INC.
 2140 Maxon Rd.
 Schenectady, NY 12308
 Fax (518) 372-6729

1000/1250/1500/2000 GALLON
**DUAL COMPARTMENT
 HEAVY DUTY GREASE TRAP**

SCALE: NOT TO SCALE	DATE: MARCH 15, 2007
TELEPHONE NO.: (518) 372-0080	JOB: GENERAL CATALOG DRAWING