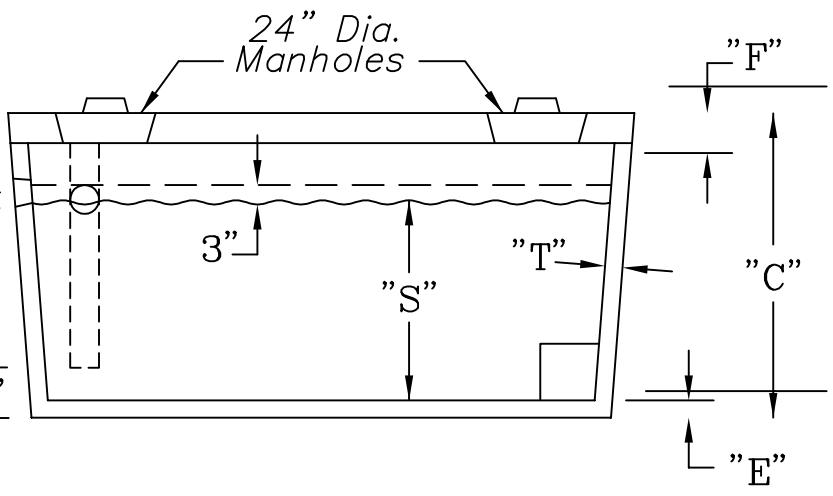


**SPECIFICATIONS:**

- Concrete: 4000 psi @ 28 days
- Entrained air: 5-9%
- Bar rein: ASTM A 615 GR60
- Fiber rein: Forta Ferro
- I/O baffle Polylok T baffle
- Max earth cover 2'
- Joint seal CS 102
- Plastic Pipe Seals
- Manufactured to meet or exceed H20



**OPTIONS:**

- Cast in EZ-Set risers
- Booted pipe seals
- Coating inside/outside
- Outlet filter
- Gas baffle

F = LID THICKNESS  
 E = BASE THICKNESS  
 C = HEIGHT OVERALL  
 I = INLET  
 A = LENGTH  
 S = LIQUID LEVEL  
 T = WALL THICKNESS  
 B = WIDTH  
 O = OUTLET

DIMENSIONS									
SIZE	A	B	C	I	O	S	T	E	F
500	113"	59"	44"	31"	29"	26"	3"	4"	4"
1000	113"	59"	61"	51"	48"	44"	3"	4"	4"
1250	126"	65"	61"	50"	47"	43"	3"	4"	4"
1500	112"	78"	49"	38"	35"	31"	3"	4"	4"
2000	151"	79"	65"	54"	51"	47"	3"	4"	4"

**GUARDIAN CONCRETE PRODUCTS INC.**  
 2140 Maxon Rd.  
 Schenectady, NY 12308  
 Fax (518) 372-6729

500/1000/1250/1500/2000 GALLON  
**DUAL COMPARTMENT GREASE TRAPS**

SCALE: NOT TO SCALE	DATE: MARCH 13, 2007
TELEPHONE NO.: (518) 372-0080	JOB: GENERAL CATALOG DRAWING