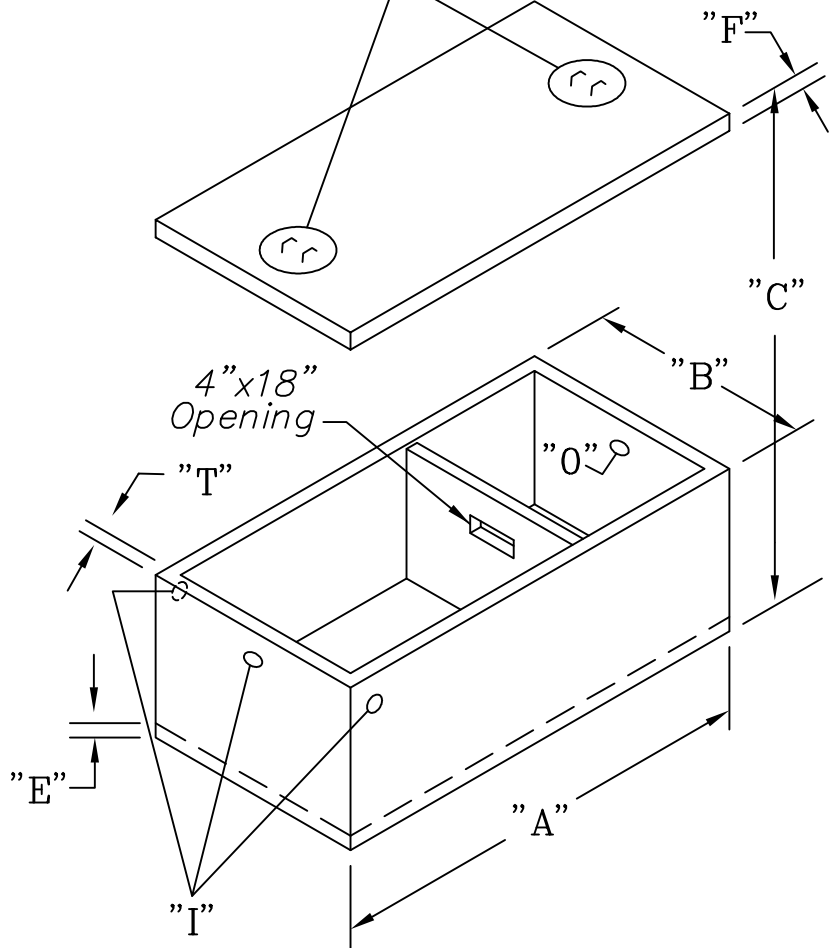


24" Dia. clear opening
with concrete cover



SPECIFICATIONS:

- Concrete: 4000 psi @ 28 days
- Entrained air: 5-9%
- Bar rein: ASTM A 615 GR60
- Fiber rein: Forta Fero
- I/O baffle Polylok T baffle
- Max earth cover 2'
- Joint seal CS 102
- Plastic Pipe Seals

OPTIONS:

- Cast in EZ-Set risers
- Booted pipe seals
- Coating inside/outside
- Outlet filter
- Gas baffle

- A = LENGTH
- B = WIDTH
- C = HEIGHT OVERALL
- S = LIQUID LEVEL
- I = INLET
- O = OUTLET
- T = WALL THICKNESS
- F = LID THICKNESS
- E = BASE THICKNESS

DIMENSIONS									
SIZE	A	B	C	I	O	S	T	E	F
1250	126"	65"	61"	50"	47"	43"	3"	4"	4"
1500	151"	79"	54"	43"	40"	36"	3"	4"	5"
2000	151"	79"	65"	54"	51"	47"	3"	4"	5"

GUARDIAN CONCRETE PRODUCTS INC.
2140 Maxon Rd.
Schenectady, NY 12308
Fax (518) 372-6729

1250/1500/2000 GALLON
DUAL COMPARTMENT
NON-TRAFFIC SEPTIC TANKS

SCALE: NOT TO SCALE	DATE: MARCH 12, 2007
TELEPHONE NO.: (518) 372-0080	JOB: GENERAL CATALOG DRAWING