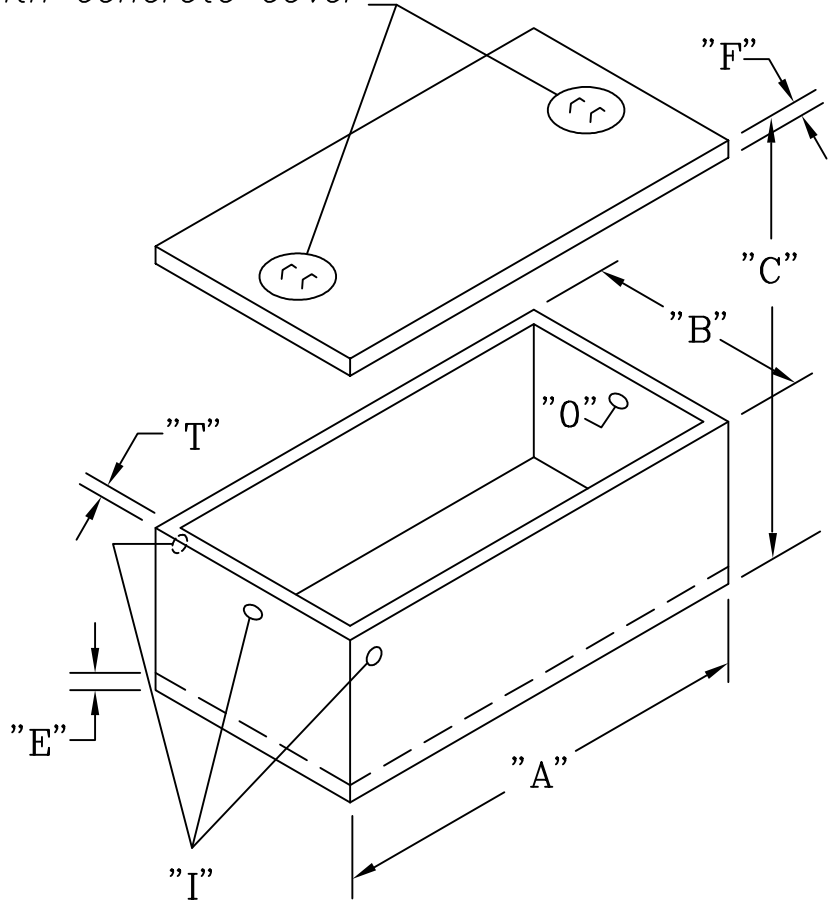


24" Dia. clear opening  
with concrete cover



**SPECIFICATIONS:**

- Concrete: 4000 psi @ 28 days
- Entrained air: 5-9%
- Bar rein: ASTM A 615 GR60
- Fiber rein: Forta Fero
- I/O baffle Polylok T baffle
- Max earth cover 2'
- Joint seal CS 102
- Plastic Pipe Seals

**OPTIONS:**

- Cast in EZ-Set risers
- Booted pipe seals
- Coating inside/outside
- Outlet filter
- Gas baffle

- A = LENGTH
- B = WIDTH
- C = HEIGHT OVERALL
- S = LIQUID LEVEL
- I = INLET
- O = OUTLET
- T = WALL THICKNESS
- F = LID THICKNESS
- E = BASE THICKNESS

| DIMENSIONS |      |     |     |     |     |     |    |    |    |
|------------|------|-----|-----|-----|-----|-----|----|----|----|
| size       | A    | B   | C   | I   | O   | S   | T  | E  | F  |
| 500        | 112" | 59" | 44" | 31" | 28" | 24" | 3" | 4" | 4" |
| 1000       | 113" | 59" | 61" | 51" | 48" | 44" | 3" | 4" | 4" |

**GUARDIAN CONCRETE  
PRODUCTS INC.**  
2140 Maxon Rd.  
Schenectady, NY 12308  
Fax: (518) 372-6729

**500/1000 GALLON  
SINGLE COMPARTMENT  
NON TRAFFIC SEPTIC TANKS**

SCALE: NOT TO SCALE

DATE: MARCH 12, 2007

TELEPHONE NO.: (518) 372-0080

JOB: GENERAL CATALOG DRAWING